



# FC 60

*multi format packaging machine*

As a convincing service provider we provide you with thorough advice and service – before and during the order processing and beyond this, with a reliable after sales service.

Design, function and handling answer to the state of the art in technology.

## <sup>1</sup> range of application

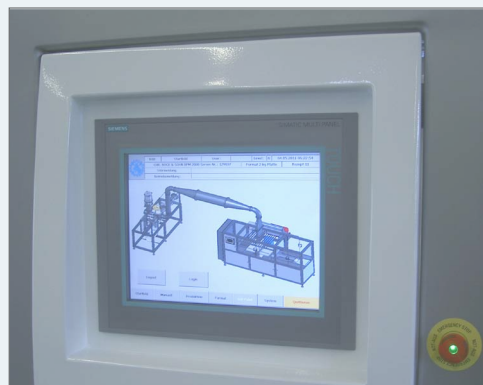
**Fully automatic packaging machine** for butter, margarine and other edible fats, as well as other comparable products of various sizes for further industrial processing.

Versatility in application in spite of little required space characterizes the system type FC 60. It is suited for user, who wish for variable formats in packaging blocks or slabs of edible fats, yet lack available space.

This packaging machine is optimized in design and function to meet the highest standards of packaging quality and process reliability.



## <sup>2</sup> ‚BOCK-TOUCH‘ system



### Exclusively for our machines

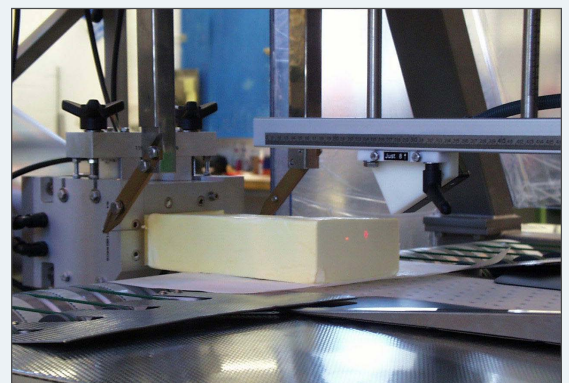
The ‚BOCK-TOUCH‘ system controls your packaging plant via touch panel according to recipes, allowing reproducible results at any time.

Speed, temperatures, cycle times and other parameters relevant to the particular product in process are adapted automatically.

The immediate fault analysis via online – teleservice provides perfect conditions for a maximum capacity production.

## <sup>3</sup> function

**The feed in of the product is realized in a hygienically closed system** while the process velocity is synchronized with the flow of product automatically. The packaging material is automatically feed from the paper reel and cut true to dimension. It is then feed to the machine where the product is taken over synchronously to the extrusion velocity. Heated extruding mouthpiece ensures gentle product in feed and accurate shape. Highly weight accurate cutting of the flowing product through the unique “Flying Cut” device, controlled by a laser measuring system. Packaging of the product and wrapping of the packaging material is realized during the further passage through the machine.



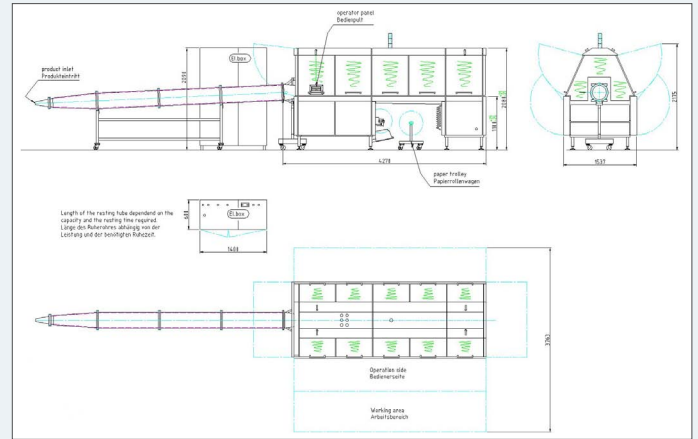


kontakt: CHR. BOCK & SOHN GmbH & Co. KG // An'n Slagboom 43-45 // 22848 Norderstedt // Germany  
 phone: +49 40 5284060 // fax: +49 40 52840622 // e-mail: mail@bockpack.com // www.bockpack.com

## 4 technical details

### FC 60 multi format packaging machine

|                     |                              |
|---------------------|------------------------------|
| range of size:      | block 2-12,5kg / sheet 2-5kg |
| max. performance:   | 8 t/h                        |
| packaging material: | min. 50 g/m <sup>2</sup>     |
| energy consumption: | 11kW in total                |
| weight of machine:  | 2,8 t                        |
| operation:          | line supervision (1 person)  |



## 5 advantages



### clear advantages ...

- blocks, bars and slabs on one machine
- intuitive operation via 12" color touch screen
- excellent accessibility to all areas
- hygienically encapsulated packaging area
- manufactured completely from stainless steel
- meets highest hygienic standards
- teleservice

## 6 accessories

### ... and everything that goes with it

- block precutting unit
- glue sealing of wrapping
- check weigher
- resting tubes in various formats
- resting tube heating system

further accessories available



All given specifications are basic values and subject to change without prior notice.