



BWA 35

„wrap-around“ carton packaging machine

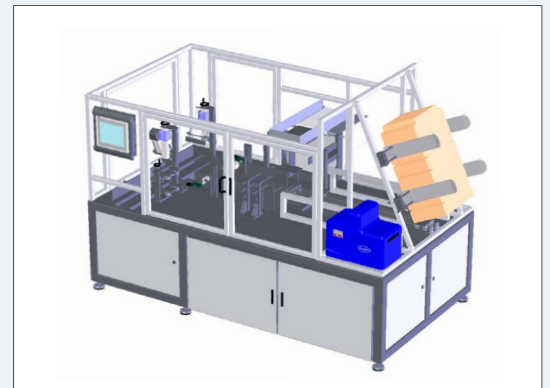
As a convincing service provider we provide you with thorough advice and service – before and during the order processing and beyond this, with a reliable after sales service.

Design, function and handling answer to the state of the art in technology.

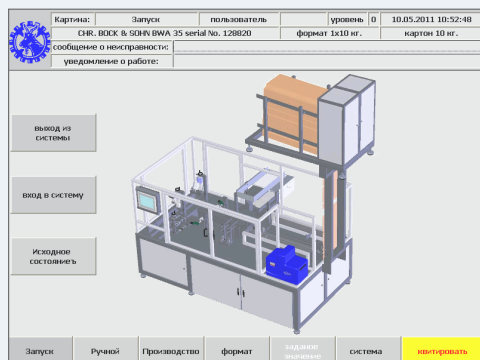
1 range of application

Fully automatic carton packaging machine based on the „wrap – around“ principle. It processes bars, blocks and slabs processed by the industry of margarine, butter and other edible fats as well as comparable products, even from the non – food sector.

This unique design in combination with state of the art technology and a most recent electronic control system guarantee a failure free operation.



2 general info



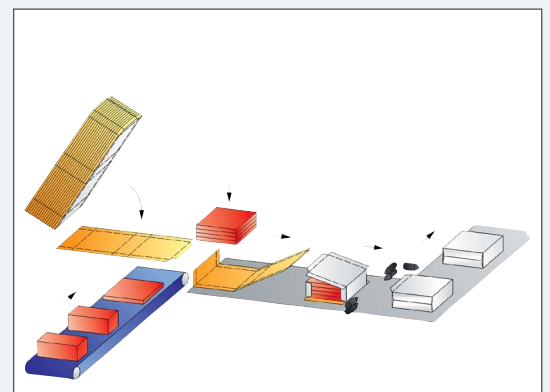
The transport of the cartons is realized via servo controlled linear actuators, which complement and optimize the well proven conventional drives. This system is characterized by its robustness and vast flexibility.

Through the linear actuators and programmed parameters, the machine is able to perform quick and automatic format change over to other formats. Even for example the glue positions are saved in the parameter set of the controls

3 function

The product is fed in by a conveyer belt and placed onto a platform for accumulation and stacking. It is then transferred onto the carton blank, which is positioned on a lowering platform. During the lowering of the blank with the product and the further transport through the machine, the carton flaps and lid are folded and glued.

Gluing of the industry flap during out feed of the machine, which is arranged perpendicular to the in feed.



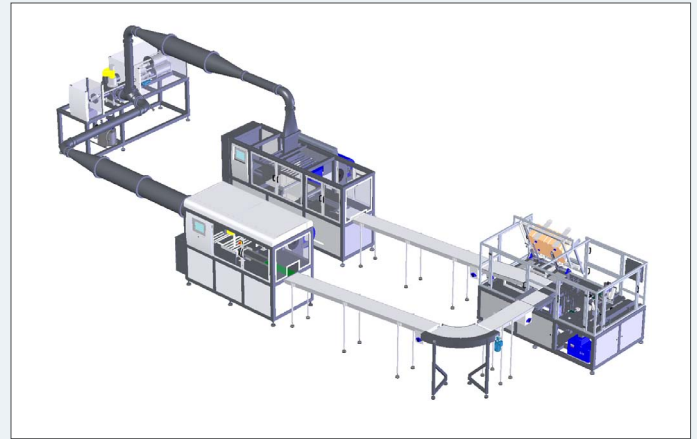


contact: CHR. BOCK & SOHN GmbH & Co. KG // An'n Slagboom 43-45 // 22848 Norderstedt // Germany
phone: +49 40 5284060 // fax: +49 40 52840622 // e-mail: mail@bockpack.com // www.bockpack.com

4 technical details

BWA 35 wrap-around carton packaging machine

product weight:	1-25 kg
carton weight:	4 - 25 kg
carton sealing:	hot melt
energy consumption:	5,5 kW in total
weight of machine:	2,3 t
operation:	line supervision (1 person)



5 advantages



clear advantages ...

- robust and compact design
- clear and well arranged working plane
- excellent accessibility to all areas
- quick format change
- processing of only one carton per cycle
- intuitive operation via 12" color touch screen
- state of the art servo technology
- manufactured almost completely from stainless steel
- teleservice

6 accessories

... and everything that goes with it

- control scale for carton content
- dispenser for advertisement leaflets
- conveyor belt for pass through without carton (stacked also possible)
- hot and cold gluing combination
- external carton magazine
- merging and distribution conveyor belt
- additional in feed conveyor belt
- transport systems

Further accessories available



All given specifications are basic values and subject to change without prior notice.